

Exercise Science (ESCI) Prerequisite Course Sequence

Concentration in Sports Conditioning (SPCD)

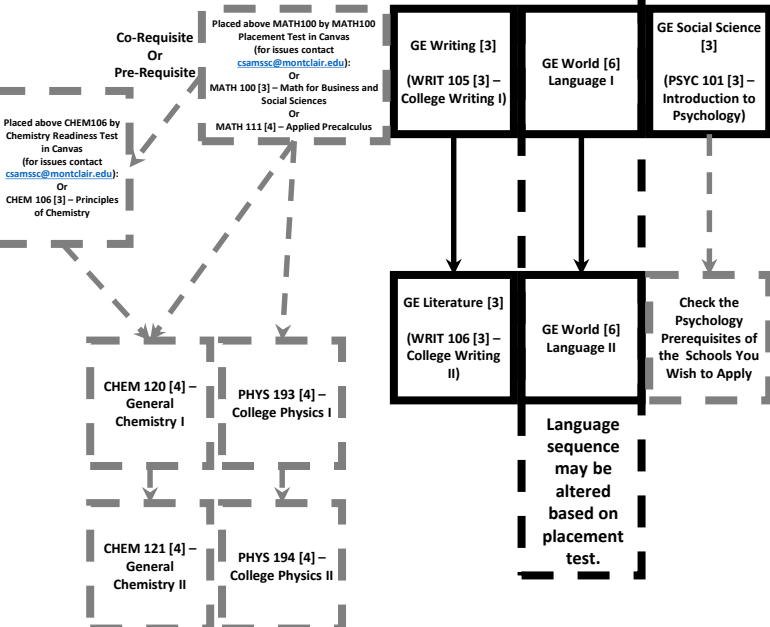
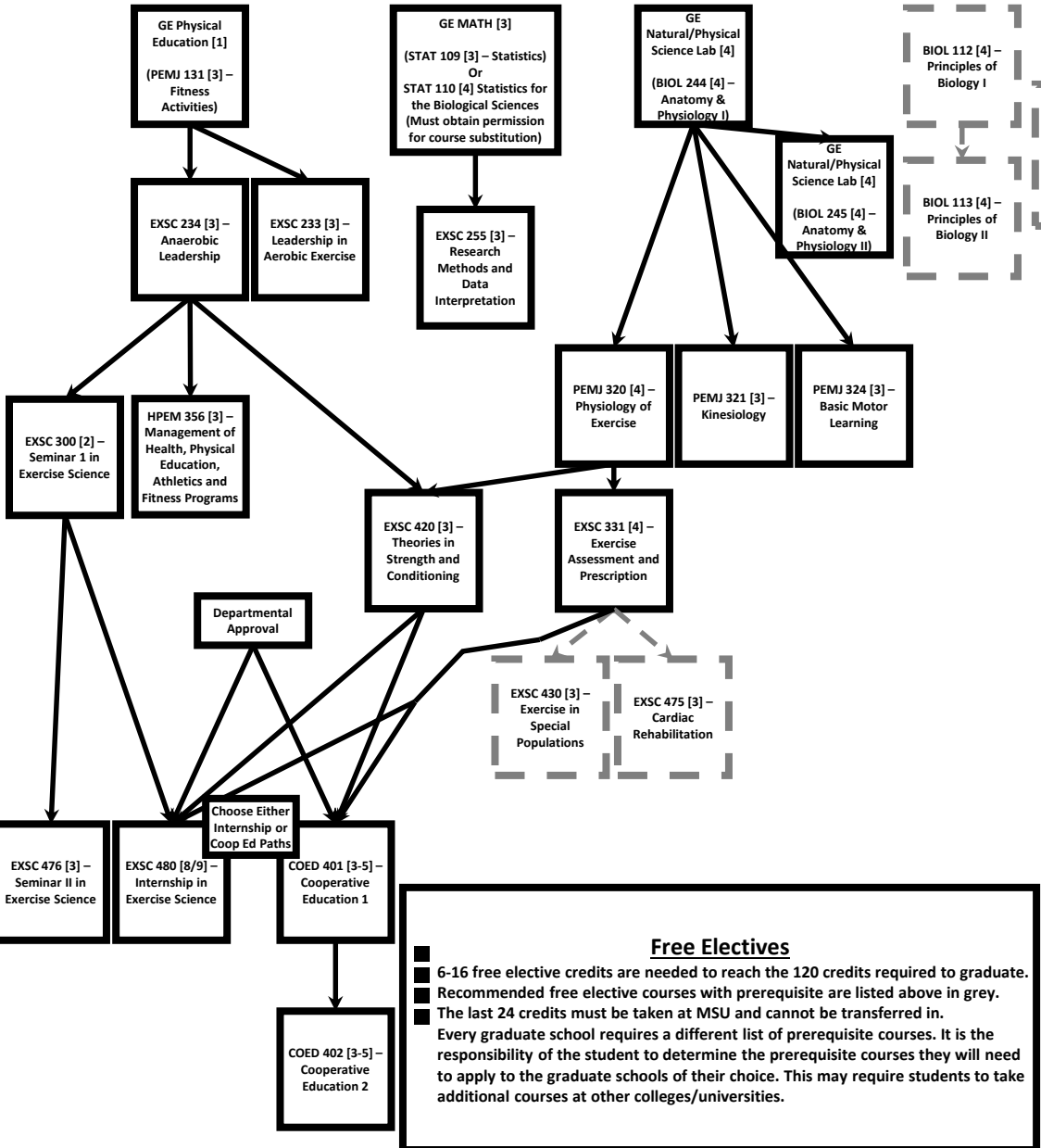
Courses must be taken in order from top to bottom following the arrows

Prerequisites listed on the slide only apply to SPCD Exercise Science students. They are different for others.

— Prerequisite
— Optional elective course sequence

Have Questions?

Talk to you advisor which can be found in the upper left corner of your Degree Works page in NEST.



Courses Not Part of A Prerequisite Sequence			
GE New Student Seminar [1] (HPPEM 199 [1] – Orientation to Health/PE Professions)	GE Communication [3] (CMST101 [3] – Fund Speech)	GE Computer Science [3] (CSIT 100 [3] – Intro to Computer Concepts)	GE World Cultures [3]
GE Great Works & Their Influences [3]	GE Philosophical & Religious Perspectives [3]	GE Fine & Performing Arts [3]	GE Global Cultural Perspectives [3]
GE American & European History [3]	GE Interdisciplinary Studies [3]		
Non-General Education Courses			
HPPEM 150 [3] – Principles and Practice of Emergency Care.	NUFD 182 [3] – Nutrition	HLTH 101 [3] – Personal Health Issues	EXSC 151 [1] - Yoga, Relaxation and Stress Reduction
CHEM 113 [4] – Fundamentals of Chemistry (Graduate schools often require CHEM 120 [4] which can be substituted for CHEM 113 with permission)			